

AN EXAMPLE OF A DISSERTATION L^AT_EX FILE

by

JEFFREY GRITTON

(Under the Direction of Major Prof)

ABSTRACT

Hello curious grad student. After my trials and tribulations at trying to create my own Dissertation Style File from scratch I eventually came to what you have now. I've have created this example .tex file for you to find your own way through L^AT_EX. I am writing this assuming you're reading through BOTH the .tex file and generated .pdf file simultaneously to see how the L^AT_EX code effects the final product. I'll warn you now, I was not paid for to do this and was trying to graduate while I did this. That being said I did not write this as a primer for how to use L^AT_EX. I did not write this well. I did not spend a huge amount of time on this. So good luck. Use this .tex file and Google. Google is your friend and will one day be our overlord. ALL HAIL GOOGLE!!!

INDEX WORDS: Put key words here for future searches. My own dissertation contained the following: High Velocity Clouds, Interstellar Medium, Intergalactic Medium, Galactic Evolution, Hydrodynamics, Magnetohydrodynamics, Numerical Simulation

AN EXAMPLE OF A DISSERTATION L^AT_EX FILE

by

JEFFREY GRITTON

Put your past education here:

B.S., Clown University Derpshire, 1652

M.S., University of Narnia Narnia, 2256

A Dissertation Submitted to the Graduate Faculty
of The University of Georgia in Partial Fulfillment
of the

Requirements for the Degree

DOCTOR OF PHILOSOPHY

ATHENS, GEORGIA

2017

© 2017

Jeffrey Gritton

All Rights Reserved

AN EXAMPLE OF A DISSERTATION L^AT_EX FILE

by

JEFFREY GRITTON

Approved:

Major Professor: Major Prof

Committee: Committee Member 1
Committee Member 2

Electronic Version Approved:

Suzanne Barbour
Dean of the Graduate School
The University of Georgia
May 2017

DEDICATION

ACKNOWLEDGMENTS

TABLE OF CONTENTS

	Page
ACKNOWLEDGMENTS	v
LIST OF TABLES	viii
LIST OF FIGURES	ix
CHAPTER	
1 INTRODUCTION	1
1.1 GETTING L ^A T _E X SET UP	2
1.2 AMERICAN ASTRONOMICAL SOCIETY’S L ^A T _E X COMMANDS	3
1.3 CHAPTERS	4
2 MIXING BETWEEN HIGH VELOCITY CLOUDS AND THE GALACTIC HALO	6
2.1 INTRODUCTION	7
2.2 NUMERICAL CODE AND INITIAL PARAMETERS	9
2.3 RESULTS	13
2.4 CONCLUSION	21
3 CONDENSATION OF HALO, CIRCUMGALACTIC, AND INTERGALACTIC GAS ONTO MASSIVE HIGH VELOCITY CLOUDS	30
3.1 SUBMITTED PAPERS	31
4 THE EVOLUTION OF MASSIVE MAGNETOHYDRODYNAMIC HIGH VELOCITY CLOUDS IN UNIFORM MAGNETIC FIELDS	32
4.1 A YET TO BE SUBMITTED PAPER	33
5 NEW CHAPTER OF DISSERTATION	34

5.1	STANDARD SECTION	34
6	CONCLUSIONS	35
APPENDIX		
A	EXTRA PARAMETERS	36
BIBLIOGRAPHY		37

LIST OF TABLES

1.1	Example Table	3
2.1	Initial Simulation Parameters	24

LIST OF FIGURES

1.1	Short Example of Includegraphics	4
1.2	Example of Plotone and Plottwo	5
2.1	System Evolution	25
2.2	Quantitative Example Fragment	26
2.3	f_h vs. Time	27
2.4	$\bar{\mathcal{M}}$ vs. Time & f_h vs. Time	28
2.5	Velocity Selections	29

CHAPTER 1

INTRODUCTION

Hello again. In this introduction I will go over a few things. Some things in the text will be examples of how to use LaTeX. Other things will point you to where you can find such things. The first is how to create an enumerated list. Like so!

Here's what to expect in this example!

1. How to install all the .sty files you will need. Section 1.1
2. How to organize the files in this `phys_diss_sty_distro.zip`
3. How to use the American Astronomical Society's LaTeX commands.
4. How to use an already published paper as a chapter in your dissertation.
5. How to use a submitted but not yet published paper as a chapter in your dissertation.
6. How to use a paper that will be submitted as a chapter in your dissertation.
7. How to format a NEW chapter.
8. How to compile your .tex file into a .pdf file with all your figures and pretty formatting.

"Sin is in, and so we begin." -Denis Leary

NOTE: Notice the quotes? You need to enter the left quotes first " and the right quotes second " or else they will come out odd. " " see? Some LaTeX editors do formatting on the fly for you in the order you type things. Be careful.

You may be asking right now why should you use LaTeX? Simple answer is most publications ask for a pdf and strict formatting guidelines. In something like MS Word this

requires you to keep track over every little bit of formatting and most publishers want a LaTeX file and supply their own .sty file that handles all the formatting for you much like how this dissertation's .sty file handles all your margins, page numbers, and much more. If you've already written papers in LaTeX you can simply copy and paste them into this file as chapters (more on that later). If you plan to cut up this dissertation into papers for publication most of the grunt work of LaTeX formatting is already done for you.

1.1 GETTING LATEX SET UP

So you've gotten your hands on my style file and the rest of the distrobution. What now? Well you need a LaTeX editor and all the basic LaTeX files. For the purpose of this I'm going to assume you're on a Linux machine with sudo control.

First step is to get a LaTeX editor. I personally like Kile or Texmaker. Kile is very no thrills (not even a spell checker) while Texmaker is a little strange about compiling commands. Get both and try them out to see what you like. You also have the option of just using a text editor like gedit or notebook and compiling everything from a command prompt. Your choice!

Next, go to a terminal and install the extra LaTeX packages that you will require. Simply type "sudo apt install texlive-full" and "sudo apt-get install texlive-latex-extra". This will take a while so go get a cup of coffee. I'll wait here.

Oh good you're back! Let's continue.

Keep all the files in this distrobution in a single directory. There is no need to move them around or issue commands to install them. As long as they are in a single directory your LaTeX editor should see them. Create subdirectories for images and use the `\graphicspath{{Images/}}` seen on line 89 of this .tex file. You can add more directories to the graphicspath `\graphicspath{{Images/}{MoreImages/}}`.

The only file you should be editing is a copy of THIS `example_dissertation.tex` file.

Table 1.1. Example Table

Text1 Row	Combined Cells		
	Text2 Stuff	Text3 More Stuff	Text4 What he said.
1	38	9	200
2	"	"	"
3	"	"	"
4	"	"	"

Note. — If you want some finer points just google Deluxetable.

Make a copy. Do a save as. WHATEVER YOU DO MAKE SURE THE ORIGINAL IS SOMEWHERE IN CASE YOU SCREW UP THE CODE!!!

At this point you're ready to start writing so now we'll move onto other things.

1.2 AMERICAN ASTRONOMICAL SOCIETY'S LATEX COMMANDS

Because I am an astrophysicist I used American Astronomical Society style packages. I've included a few of the more useful commands into the physdiss.sty file. The first is the Deluxetable environment. This is a wonderful little tool for making pretty tables. If you're publishing with AAS you will probably use it. If not.... well you can make nice easy tables for your dissertation and deal with the terrible default table environment later (There is actually an example of the default environment in the Chapter 2 code). To create a table you simply add the following to the .tex file:

Notice right now that where the table appears is not 100% up to you. This is a short-coming of Deluxetable that I have yet to find a solution to.

"But Jeff! I need to add figures! What about those?" To that I say, calm down! I'm getting there. There are 3 ways using this .sty file that allows you to add images.

- `\includegraphics`
- `\plotone`
- `\plottwo`

The first is the default method using the package `Grafix` which is already in the preamble, the code before `"\begin{document}"` on line 90. It looks something like this:

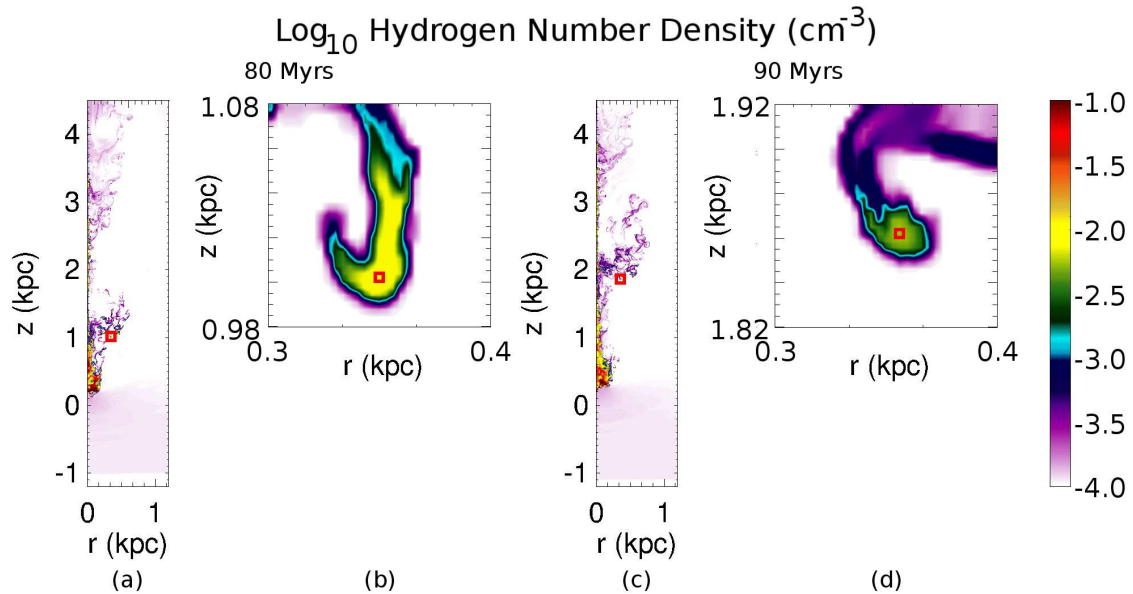


Figure 1.1: Short Example of Includegraphics

Notice that I use both `caption` and `caption*`. This is because the code that creates the list of figures will pull in what is in `caption`. We need that to be short and to the point. Not the usual explanation of a figure note. Using this method also gives you a ton of control when it comes to file format, though I suggest `eps`, and multi-image figures. Feel free to Google them as there are too many things to cover here. Just search for something like subfigures and you should find what you're looking for.

Next I will show you the AAS alternative. If you don't need subfigure labels and just need to slap a bunch of images into a single figure use `plotone` and `plottwo` like so:

1.3 CHAPTERS

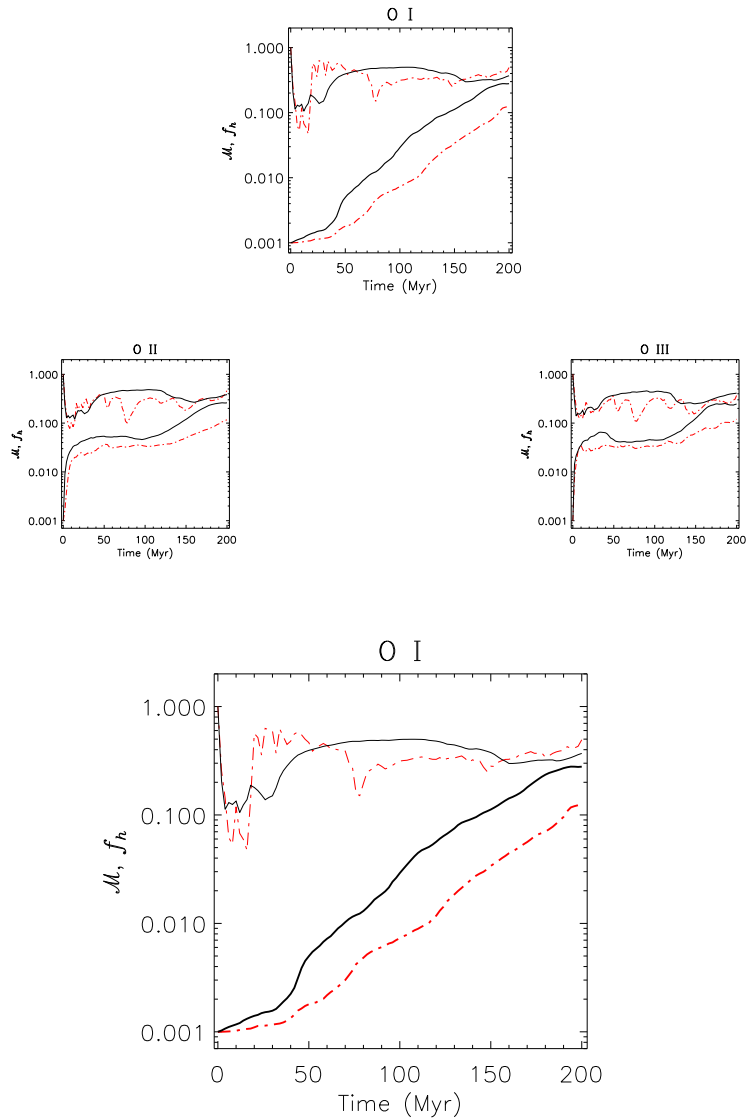


Figure 1.2: Example of Plotone and Plottwo

Super easy. You can control the size of an image with the `epsscale` command and do a number of tricks. The downside is that you must use eps files and you can't sub-label each image with things like (a), (b), (c).

CHAPTER 2

MIXING BETWEEN HIGH VELOCITY CLOUDS AND THE GALACTIC HALO¹

¹Gritton, Jeffrey A., Shelton, Robin L., and Kwak, Kyujin, 2014, *The Astrophysical Journal*, Vol. 795, No. 99. Reprinted here with permission of publisher and authors.

2.1 INTRODUCTION

High velocity clouds (HVCs) are clouds of gas whose speeds differ substantially from the local standard of rest (LSR). The minimum speed in the LSR reference frame is classically defined as $|v_{\text{LSR}}| = 90 \text{ km s}^{-1}$, but it should be noted that speeds as low as 70 km s^{-1} and as high as 100 km s^{-1} have been used to define a lower limit for HVCs (Wakker & van Woerden 1997, and references therein). Although the original use of the term ‘HVC’ implied that the cloud is neutral, ionized high velocity material has been observed (see Hill et al. 2009 and Putman et al. 2012). In fact, moderately ionized and highly ionized fast moving material appears to cover larger fractions of the sky (81% for Si III, Shull et al. 2009; Collins et al. 2009 and 60% for O VI, Sembach et al. 2003) than does neutral material (37% for H I with column densities exceeding $\sim 7 \times 10^{17} \text{ cm}^{-2}$, Murphy et al. 1995; Lockman et al. 2002). For the purpose of this paper, we shall refer to both neutral and ionized high velocity gas as HVC gas.

Three major origin theories exist for HVCs; feedback (or fountain), satellite accretion, and accretion from the IGM. Feedback entails Galactic disk gas being ejected into the halo, like in a fountain that is energized by various processes such as stellar winds from young stars and supernovae. This ejected gas cools in the halo, via radiative cooling, and accretes onto the disk. The second idea on our list, the loss of material from satellite galaxies is exemplified by the Magellanic Stream (see Figure 1 of Wakker & van Woerden 1997 and Putman et al. (2012)) that trails behind the LMC and SMC. As these dwarf galaxies pass through the Milky Way’s extended halo, some of their gas is ram pressure stripped and tidally stripped off of them. Perhaps as the gas falls towards the disk of our Galaxy it may become shock heated and fragment to the point of becoming indistinguishable from our Galaxy’s halo gas or condense, due to radiative cooling, and continue to travel toward the disk of our Galaxy as HVCs. Lastly, dark matter-dominated gas-bearing clouds are both expected in simulations of the Local Group (Klypin et al. 1999) and observed (Adams et al. 2013) while IGM that flows along galactic filaments has been shown in simulations to condense and accrete along

the filaments (Joung et al. 2012). Some of this gas could continue to cool and begin falling towards our Galaxy’s disk.

Each of these origins results from a different reservoir of gas, each of which should have a different metallicity. Thus observed metallicities provide clues to the origins of the clouds. For example, Tripp et al. (2003) and Collins et al. (2007) state that the low metallicities and differing metallicity measurements between different sight lines in Complex C imply that it originated from a more pristine reservoir of gas than the disk of the Milky Way and has mixed, and is mixing, with ambient material.

A cloud’s metallicity, however, is also affected by the cloud’s interaction with its environment. In our simulations, the HVC gas mixes with ambient halo material. Specifically, during the mixing process, the HVC fragments and the resulting fragments entrain and accelerate halo material. The metallicity of the mixed material is between that of the original cloud and the halo. As the cloud continues to move through the halo it will entrain more halo material, further modifying the observed metallicity.

It should be noted that, for the purpose of this paper, we do not use the technical definition of metallicity ($\log_{10} \left(\frac{n_{\beta}}{n_H} \right) - \log_{10} \left(\frac{n_{\beta}}{n_H} \right)_{\odot}$), where n_{β} is the number density of any chosen element, β , and n_H is the number density of hydrogen. In casual discussion, the term metallicity is taken to mean the ratio of the measured abundance over the solar abundance ($\frac{\left(\frac{n_{\beta}}{n_H} \right)}{\left(\frac{n_{\beta}}{n_H} \right)_{\odot}}$). We use this meaning of the term metallicity and use the $\left(\frac{n_{\beta}}{n_H} \right)_{\odot}$ values in Anders & Grevesse 1989; e.g., 9.77×10^{-2} , 3.63×10^{-4} , 1.21×10^{-4} , and 8.51×10^{-4} heliums, carbons, nitrogens, and oxygens per hydrogen. Our definition allows us to define solar metallicity to have a value of unity ($\mathcal{M}_{\odot}=1.0$). This shall be the convention used throughout the paper when discussing the effects of mixing upon the various metallicities we report, unless otherwise stated.

Not only is determining the extent of mixing important for determinations of a cloud’s original metallicity, but it is also important for understanding the accretion of Milky Way gas into HVCs. To examine the effect of mixing in detail, we run detailed 2 and 3 dimensional

hydrodynamic simulations. We use the FLASH version 2.5 (Fryxell et al. 2000) code. Our methodology and initial conditions are described in Section 2.2. In Section 2.3, we present the simulational results. Specifically, Subsection 2.3.1 shows how the metallicity of high velocity material can be augmented on small scales. Subsection 2.3.2 shows that the degree of mixing is correlated with the ionization level of the gas such that weakly ionized high velocity gas is least mixed and highly ionized high velocity gas is well mixed. In Subsections 2.3.2.1 and 2.3.2.2, respectively, we explore the effects of mixing on the high velocity and decelerated gas. In Subsection 2.3.3 we further examine the relationship between velocity and metallicity. We present our conclusions in Section 2.4.

2.2 NUMERICAL CODE AND INITIAL PARAMETERS

We use FLASH to calculate the hydrodynamic interaction between the cloud and Milky Way halo gas. We implement two general domain geometries, one of which uses a 2 dimensional, fixed, cylindrically symmetric domain of height=20,800 pc (spanning from $z=-1,200$ pc to 19,600 pc) and radius=1,200 pc (Model A), while the other (Model B) uses a 3 dimensional, fixed, Cartesian domain of height=10,800 pc in z (spanning from $z=-1,200$ pc to 9,600 pc) and cross sectional dimensions $x=1,200$ pc and $y=1,200$ pc (spanning from $x=0$ pc to $x=1,200$ pc and $y=0$ pc to $y=1,200$ pc). In Model B we assume a nearly symmetric structure across the $x=0$ pc and $y=0$ pc planes and therefore simulate one fourth of the cloud to make better use of our computational resources. In addition to the $\frac{1}{4}$ cloud results presented in this paper, preliminary simulations of a half-cloud were made. There was little difference in visible morphology between the $\frac{1}{2}$ cloud and $\frac{1}{4}$ cloud simulations. However, additional half-cloud simulations were deemed unfeasible due to their longer wall clock times. We reserve half-cloud simulations for future projects. Although we use an adaptively refinable grid, we begin the simulations at full refinement such that all zones span ~ 3 pc along the z -direction and ~ 3 pc along the radial direction for Model A, and ~ 9 pc in x , y , and z directions for

Model B. Aside from the domain and geometry, all other initial parameters are the same between our two models.

A 150 pc radius spherical cloud is initially placed with its center at $z=0$ pc, $r=0$ pc in Model A, and at $x=0$ pc, $y=0$ pc, and $z=0$ pc in Model B. As in Model C of Kwak et al. (2011), all of our model clouds are warm (cloud temperature, $T_{cl}=10^3$ K), moderately dense (cloud density of hydrogen, $n_{H,cl}=0.1$ cm $^{-3}$ and density of helium, $n_{He,cl} \cong 0.1 \times n_{H,cl}$) and surrounded by hot ($T_{ISM}=10^6$ K), low density (density of hydrogen, $n_{H,ISM}=10^{-4}$ cm $^{-3}$ and density of helium, $n_{He,ISM}=0.1 \times n_{H,ISM}$) Milky Way halo gas. The halo number density falls within observational constraints (see Kwak et al. 2011). It is slightly less dense than the material around Complex C ($10^{-3.3}$ to $10^{-3.0}$ cm $^{-3}$, see Hsu et al. 2011) and similar to that around the tail of the Magellanic Stream ($10^{-4.1}$ to $10^{-3.7}$ cm $^{-3}$, see Hsu et al. 2011). Our halo density is chosen to mimic the extended halo as calculated by Wolfire et al. (1995) and modeled by Heitsch & Putman (2009). Our halo material remains at a constant density throughout the simulation. This is not so dissimilar from reality, in that the observationally determined gradient is small, with a factor of ~ 6 decrease in density from the height of Complex C to the height of the tail of the Magellanic Stream. An object travelling at an oblique angle to the Galactic disk would experience an even smaller gradient. We choose this scenario so that the effects of mixing can be studied over a longer period of simulated time without changes to variables, such as ambient density, that would effect the rates of ablation by damping or increasing hydrodynamic instabilities. We did not model density inhomogeneities (i.e., clumpiness) as the size scale and density contrast of such inhomogeneities are not well understood. Future projects shall focus on the effects of density, speed, magnetic fields, and gravity, as they relate to the survival and mixing of HVCs. Each of these variables can play important roles in the evolution of an HVC and may alter the mixing characteristics (see Kwak et al. 2009).

Rather than model a sharp boundary between the cloud and ISM, we model a smooth transition in both density and temperature following the function

$$n_H(r) = -0.5(n_{H,cl} - n_{H,ISM}) \tanh\left(\frac{r - 150\text{pc}}{20\text{pc}}\right) + 0.5(n_{H,cl} + n_{H,ISM})$$

which is similar to the density profiles used in simulations by Heitsch & Putman (2009) and Kwak et al. (2011) who based their hyperbolic tangent transition function on the observations of Burton et al. (2001). For a graphical representation of the above equation see Figure 1 of Kwak et al. (2011). The density decreases with radius in a transition zone that extends from $r \cong 90$ pc to $r \cong 210$ pc, with the above quoted cloud radius being the radius at which the density drops to half that of the cloud's center. Any material within the transition zone that initially has $n_H \geq 5 n_{H,ISM}$ (i.e., any material within ~ 210 pc of the cloud's center) is assigned the velocity and metallicity of the cloud (see below); note that the majority of this material (over 80% by mass) is within $r=150$ pc. At the beginning of each simulation, the temperature in the transition zone increases with radius as the density decreases with radius such that the thermal pressure remains constant and is equal to that in the cloud and ambient gas at the beginning of the simulation. It should be noted that the pressure used in the hydrodynamic calculations is determined using the approximation that the hydrogen and helium in the cloud are fully ionized, but collisionally ionized gas at the model cloud temperature is not fully ionized. The ionization approximation affects only the pressure calculations done by FLASH. The effect of this approximation is that the cloud is less compressible than a fully neutral cloud. However, observed clouds are found to be partially ionized. Hill et al. (2009), for example, determined the mass of the Smith Cloud to be 5.0×10^6 solar masses (M_\odot) in neutral hydrogen and $\sim 3 \times 10^6 M_\odot$ in ionized hydrogen. From this we can say that $\sim \frac{3}{8}$ of the hydrogen in the Smith Cloud is ionized.

The metallicities of observed HVCs are generally lower than those of the Milky Way and may have been even lower before the high velocity gas began to mix with the Milky Way

gas. In order to track the permeation of Milky Way gas into high velocity gas and vice versa, we give our model HVC and model halo gas different metallicities. We give the halo gas solar photospheric metallicities ($\mathcal{M}_h = \mathcal{M}_\odot = 1.0$) and we give the HVC gas, also simply referred to as cloud gas, extremely small metallicities, $\mathcal{M}_{cl} = 0.001$. The low metallicity of the cloud extends through most of the transition zone and ends where $n_H = 5 n_{H,ISM}$. Later in the simulation, when moderate metallicities of metals are found in high velocity gas, their magnitudes minus the initial 0.001 metallicity of the cloud, can be attributed to mixing and thus directly provide a quantitative measure of the permeation of Milky Way gas into high velocity cloud gas. It should be noted that our choices of metallicities for the initial cloud and ambient material can be changed to any value.

As will be shown in Section 2.3, the degree of permeation varies such that plasma in which the metals are highly ionized generally contains larger fractions of Milky Way gas than does plasma in which the metals are poorly ionized. Examination of this trend requires accurate tracking of the ionization levels of the gas, for which we use FLASH’s non-equilibrium ionization (NEI) module. The NEI module is used to calculate the extent of the ionization and recombination that occurs during each time step, although the ionization levels at the beginning of each simulation are calculated under the assumption of collisional ionization equilibrium. Thus initially the cloud is predominantly neutral, based upon its temperature.

As in Model C of Kwak et al. (2011), the halo gas and the HVC move at 150 km s^{-1} relative to each other. A velocity of this magnitude allows us to distinguish high velocity material from normal velocity material. Our simulations are conducted in the initial rest frame of the cloud. I.e., at the beginning of the simulation the cloud is stationary in the domain and throughout the simulation hot halo gas flows upwards (in the positive z -direction) at a speed of 150 km s^{-1} . This choice of rest frame allows us to model the mixed gas over a longer period of time in a moderately tall domain than could be done if the simulations had been conducted in the halo’s rest frame. However, for the convenience of the reader, and for easier comparison with observations, we report all velocities in the halo’s rest frame, from the point

of view of an imaginary observer situated below the bottom of the domain. We accomplish the conversion by subtracting 150 km s^{-1} from the simulated velocities in the z -direction. Henceforth, simulated material that moves upwards (away from the Galactic plane) in the halo’s rest frame will be described as having a positive velocity in the z -direction while material that moves downwards (toward the Galactic plane) will be described as having a negative velocity. The total duration of our simulations is 200 Myrs in simulation time which is longer than is typical in HVC simulations. This duration and all initial parameters are listed in Table 2.1.

2.3 RESULTS

The HVC’s behavior; including its deformation, shredding, and mixing with the surrounding gas, can be seen in Figure 2.1 for Model B (Model A exhibits similar gross behavior). The top row of panels in the figure shows the density in the form of number of hydrogens per cm^3 , where, as mentioned in Section 2.2, there are also 9.77×10^{-2} heliums for every hydrogen. The middle row shows the temperature. The bottom row shows the metallicity, where oxygen is used as an example element though we also simulate and track carbon. Each variable is plotted as a function of location on the x - z plane along a slice through the domain at $y=0$. We assume that the structure is approximately symmetric across the $x=0$ pc and $y=0$ pc plane; only positive x and y space is simulated, and only one slice at $y=0$ pc is shown. The displayed panels depict the structure at 0, 40, 80, 120, 160 and 200 Myrs of simulation time but data is collected via output files every 2 Myrs of simulation time and a large number of timesteps (typically 560 and 90 for Models A and B) occur between file outputs.

The semicircle shaped object initially at $x, z=0$ in the leftmost of these panels is a slice of one quarter of the cloud at the beginning of the simulation. As time progresses, the ISM sweeps past it, deforming its shape, creating instabilities, and pulling off material. In the region above the cloud, the two fluids (ablated cloud material and ISM) create a plume of intermediate density material that is observable in the density profiles in the top row of

Figure 2.1. The ablated cloud material and ambient materials mix, not only on the large scale (such as the 150 pc radius of the cloud), but also on the small scale (in the simulations we see mixing on scales as small as a few cells). The mixing of ablated cloud gas with halo gas lowers the temperature of the plume material relative to that of the halo, and radiative cooling lowers it further. These processes, mixing and radiative cooling, cause the plume of ablated and mixed gas that trails the cloud to be cooler than its surroundings. See the temperature profiles in the center row of Figure 2.1. In general the metallicity in the plume is greatest at the top and least at the bottom. While this is also the case for the temperature, temperature and metallicity are not tightly correlated. The metallicity of any given segment of gas is affected only by mixing while the temperature of any given segment of gas is affected by mixing and cooling. The cooling rate is dependent upon the temperature of the mixture and is generally different from the weighted mean of the temperature dependent cooling rates of the mixing gasses.

Not only are the metallicities in the mixed gas interesting for observational studies, but in our simulations they provide a quantitative measurement of the extent of mixing that has occurred. A mixture in which the fraction (by mass) of cloud material is f_{cl} and the fraction (by mass) of halo gas is f_h will have an average metallicity of $\mathcal{M} = f_{cl}\mathcal{M}_{cl} + f_h\mathcal{M}_h$ where \mathcal{M}_{cl} and \mathcal{M}_h are the initial metallicities of the cloud and halo respectively. We choose our initial metallicities so that the preceding equation simplifies to $\mathcal{M} \cong f_h$, allowing us to track both the mixing of cloud and halo gas and the evolution of the cloud’s metallicity simultaneously.

2.3.1 EXAMPLE FRAGMENT

As a demonstration, we examine the mixing in a single intermediate temperature, intermediate density ablated fragment modeled in the FLASH simulation for Model A. We choose a somewhat dense fragment of material that was ablated from the cloud. Figure 2.2a identifies the chosen fragment at 80 Myrs when it is located at $(r, z) = (350 \text{ pc}, 1,000 \text{ pc})$; Figure 2.2b shows a close-up view of the fragment at this time. We track the fragment’s motion as the

simulation time progresses by an additional 10 Myrs. Figures 2.2 c&d show the fragment at 90 Myrs, after it has reached a position of $(r, z)=(350 \text{ pc}, 1,900 \text{ pc})$. In order to provide an example quantitative analysis, single parcels in the densest part of the fragment are chosen for examination at both epochs. These parcels are located in the centers of the red boxes in the close-up images. We determine the extent of the mixing that has occurred in these parcels by examining their metallicities. At 80 Myrs the center parcel has an oxygen metallicity of 5% of the solar value, and using $\mathcal{M} = f_{cl}\mathcal{M}_{cl} + f_h\mathcal{M}_h$ from the paragraph above, as well as $\mathcal{M}_{cl}=0.001$ and $\mathcal{M}_h=1.0$, we deduce that the parcel is composed of 5% halo gas and 95% cloud gas. In the span of 10 Myrs, the metallicity in the center of the fragment increases to 10% of the solar value, indicating that the material in the fragment's center is now composed of 10% halo material and 90% cloud material. Therefore we can state that some halo gas permeates even moderately dense tails of ablated gas, and that the timescale for permeation is relatively short. These points apply to all of our simulations.

2.3.2 GLOBAL ANALYSIS

Logically, the extent of mixing should be related to the duration of exposure between the material that has been ablated from the cloud and the surrounding hot halo gas. There should also be a relationship between the degree of mixing and the material's ionization level. This is because mixing transfers thermal energy from the halo material to the cloud material, bringing the temperature of the mixed gas to an intermediate value. As the temperature begins to equilibrate, the atoms that were contributed by the cloud should begin to ionize while those that were contributed by the halo should begin to recombine. Subsequent radiative cooling only complicates the situation. The hydrodynamical interaction slows the material that was contributed by the cloud while accelerating the entrained halo material, resulting in a relationship between the material's velocity and its degree of mixing (and thus its metallicity). In this subsection, we calculate the progression of mixing for gas throughout the domain as a function of time, ionization level, and velocity. We characterize the mix-

ing by the resulting metallicity of our sample elements oxygen and carbon and present our results in a form that can be compared with observations.

A real observation of a high velocity cloud will sample material along a line of sight. Optimally, multiple lines of sight will be used in order to calculate the average metallicity. In both cases, the metallicities of various parts of the structure are averaged together. Similarly, averages can be calculated from our simulation. Here, we average over all of the gas in the domain that has a low speed relative to the halo ($\vec{v}_z < 100 \text{ km s}^{-1}$), and we separately average over all of the gas in the domain that has a high speed relative to the halo ($\vec{v}_z \geq 100 \text{ km s}^{-1}$). These procedures are equivalent to calculating the averages from hundreds of vertical sight lines through the domain. Thus, when we examine the extent of the mixing as sampled by particular ions of oxygen and carbon, we do so for all such ions in the domain; i.e. we average the metallicities of all such ions in the domain.

We plot the average metallicities (i.e., the metallicity of oxygen averaged over all parcels in the domain), $\bar{\mathcal{M}}$, with the appropriate velocity in the domain, as functions of time for individual ionization levels of oxygen for each model in Figure 2.3. We show the metallicities of both high velocity, $\bar{\mathcal{M}}_{v>100}$, and low velocity, $\bar{\mathcal{M}}_{v<100}$, material. The latter includes the ‘stationary’ halo gas, which outweighs the cloud gas. Here, we treat $\bar{\mathcal{M}}$ as being equal to f_h , because, for our choices of cloud and halo metallicities, they are approximately equal. The same can be stated for the carbon traces in both models. Additionally, certain ions of carbon follow the same trends as an oxygen counterpart which we shall discuss in the following subsections. Therefore, for clarity, our plot of the metallicity as traced by ions of carbon uses a single model, Model B (see Figure 2.4).

2.3.2.1 ANALYSIS OF HIGH VELOCITY GAS

We first consider the high velocity O I panel of Figure 2.3. At the start of the simulation, the only source of high velocity gas in the domain is the cloud, including most of the transition zone between the cloud’s interior and the halo. Initially the cloud has approximately

primordial metallicities. For this reason, the initial metallicities of the O I to O IX ions in the high velocity gas is $\mathcal{M}_{cl}=0.001$. As the simulation progresses, hot, highly ionized, solar metallicity, halo plasma mixes with material at the surface of the cloud and with material that has been shed from the cloud, rapidly augmenting the average metallicities in the formerly-cloud gas. Early in the simulations, most of this material moves at $\vec{v}_z > 100 \text{ km s}^{-1}$, in which case, the entrained metals count toward $\bar{\mathcal{M}}_{v>100}$ rather than $\bar{\mathcal{M}}_{v<100}$. Although the freshly entrained halo gas had been hot, it cools by sharing thermal energy with the formerly-cloud gas and by radiating photons. As the metals in the entrained halo ions cool, they recombine, causing $\bar{\mathcal{M}}_{v>100}$ for O I to rise approximately monotonically throughout the simulation. By the end of the simulation, $\bar{\mathcal{M}}_{v>100}$ for O I for Model A has reached a value slightly greater than 0.1 while in Model B has risen to over 0.25. Thus, even the neutral part of the HVC contains $\sim 10\%$ or $\sim 25\%$ halo gas in Models A and B respectively.

The difference between $\bar{\mathcal{M}}_{v>100}$ for these two cases shows that the 3D simulations are more efficient than the 2D simulations at entraining and cooling halo material. This is because the clumps are able to fragment along all three Cartesian dimensions in the 3D simulations but are able to fragment along only 2 dimensions (r,z) in Model A. Model B is the more realistic of the two models.

For O II, O III, O IV, O V, and O VI, $\bar{\mathcal{M}}_{v>100}$ experiences a rapid increase during the first few timesteps as halo material mixes with the outermost portions of the cloud. The lower density at the interface between the cloud and halo material allows this gas to be ablated and mixed more efficiently. But soon the behaviors of $\bar{\mathcal{M}}_{v>100}$ for these ions becomes more complicated. Ionization of former cloud gas reduces $\bar{\mathcal{M}}_{v>100}$ while recombination of entrained, initially highly ionized halo gas raises $\bar{\mathcal{M}}_{v>100}$ with the result that $\bar{\mathcal{M}}_{v>100}$ vacillates in time about a near constant value when the cloud is stable and increases to higher values during ablation events. $\bar{\mathcal{M}}_{v>100}$ for O II O III, O IV, O V, and O VI reach values values of ~ 0.2 to ~ 0.6 .

O VII, O VIII, and O IX are the natural charge states of oxygen in the halo gas. The high velocity O VII, O VIII, and O IX ions that appear from the second timestep onwards in our simulations are due to halo material that has been accelerated by the cloud. In Model A, $\bar{\mathcal{M}}_{v>100}$ for these ions asymptotically approaches about 0.9. In Model B, $\bar{\mathcal{M}}_{v>100}$ for these ions is more complicated. The values rise early on, fall, and later reach a maximum value around 0.7.

The above noted details notwithstanding, the trends in metallicities are often fairly similar in Models A and B and all values agree to within an order of magnitude. However, of the two models, Model B has the more realistic simulation geometry and will be relied upon more heavily in subsequent subsections. The above comparisons also show that the shortness of Model B's domain (which allows mixed material to flow out of the domain through the upper boundary as early as $t=30$ Myrs) does not greatly affect the $\bar{\mathcal{M}}_{v>100}$ results. Most of the material that has left Model B's domains had slowed significantly before doing so and is therefore not considered in our calculation of $\mathcal{M}_{v>100}$.

We plot $\bar{\mathcal{M}}$ values for carbon in Figure 2.4. Unlike Figure 2.3 we only plot Model B. Ions that mimic each other's trends are as follows: O I and C I, O II and C II, O III and C III, O IV and C IV. Note that O V and O VI match C V, with values varying by no more than 0.05 between O VI and C V. All of the remaining ions, O VII, O VIII, O IX, C VI, and C VII, follow the same trend with values increasing in the order C VI, O VII, C VII, O VIII, O IX.

For the majority of the ions of both carbon and oxygen, the average metallicity in the high velocity gas in our simulations is generally at least 300 times larger than the original metallicity of the cloud, which in our simulations is extremely low.

Initially Model B's domain (because of the symmetry, this represents $\frac{1}{4}$ of the cloud and surrounding halo) contains almost 13,000 M_{\odot} of material at HVC speeds. Of this HVC gas 97% can be defined as cool ($T \leq 10^4$ K). As hot halo gas sweeps past the cloud, material is ablated from the cloud and mixed, resulting in intermediate temperatures, speeds, and metallicities. By 100 Myrs we see that the total mass of high velocity material in the domain

has increased by ~ 40 solar masses due to capture of halo material and condensation. All of the gas at high velocities is counted, because the only material that leaves the domain has decelerated to velocities below 100 km s^{-1} and is no longer considered high velocity material. Of the high velocity gas 92% is cool while 8% is now warm or hot at 100 Myrs, showing that the evolution of the cloud happens slowly at first. As of 200 Myrs, the domain contains only about $3400 M_{\odot}$ of high velocity material, $\sim \frac{1}{4}$ of the initial high velocity content, with $\sim 2600 M_{\odot}$ as cool high velocity gas and $\sim 800 M_{\odot}$ as warm or hot high velocity gas. I.e., in the span of 200 Myrs, $\frac{3}{4}$ of the initially high velocity gas has decelerated to speeds below 100 km s^{-1} .

2.3.2.2 ANALYSIS OF LOW VELOCITY GAS

When we shift our attention to the low velocity gas, we see higher average metallicities in both carbon and oxygen. This effect occurs because the low velocity cut preferentially selects halo gas whose metallicities have been tempered by the addition of gas that has been ablated from the cloud and decelerated to within 100 km s^{-1} of the halo's rest frame. The contribution of the low metallicity cloud gas is most manifest in the O I and C I ions, because the original cloud was predominantly neutral while the original halo gas was nearly devoid of neutral material (with the exception of the cloud-halo interface, which includes a small amount of $T \leq T_{\text{ISM}}$ gas that has halo metallicity and halo velocity; this material is responsible for the solar metallicity low and intermediate ions in the domain at $t=0$ Myrs seen in Figure 2.3). For example, the value of $\bar{\mathcal{M}}_{v<100}$ for O I falls as low as 0.05 (before rising to higher values), which is the lowest $\bar{\mathcal{M}}_{v<100}$ for any of the ions in our simulations, while the value of $\bar{\mathcal{M}}_{v<100}$ for C I falls to 0.1 before rising. The presence of low and moderate metallicity O I and C I-bearing gas at $\vec{v}_z < 100 \text{ km s}^{-1}$ suggests that if low metallicity, low velocity gas is found in the halo, shredding of low metallicity HVCs is one possible source.

Mixing between the halo and cloud gas raises the temperature and ionizes formerly cloud gas by the time it has decelerated to a speed below 100 km s^{-1} . As the neutral material in the

slowed gas experiences warmer temperatures and collisions with faster electrons, it ionizes. This occurs as early as the first simulated timestep and results in significant changes to the metallicities of O II, O III, and O IV as well as C II, C III, and C IV, by the end of the first timestep. Thus $\bar{\mathcal{M}}_{v<100}$ for O II and O III as well as C II and C III, drop to less than 0.1, and $\bar{\mathcal{M}}_{v<100}$ for O IV drops to less than 0.3 within a few million years of the simulation's start. As we look at more highly ionized material the metallicities of O V and C IV are lowered less drastically but still experience values less than solar. After these initial drops, the $\bar{\mathcal{M}}_{v<100}$ for O II through O V, and C II through C IV, rise and fall with time, due to competition between ionization in the mixed, initially low metallicity cloud gas and recombination in the initially high metallicity halo gas. Thus, after the first million years, $\bar{\mathcal{M}}_{v<100}$ vacillates between smaller ranges: 0.08 to 0.5, 0.1 to 0.5, 0.2 to 0.5, and 0.3 to 0.7 for O II, O III, O IV, and O V respectively and similar values for C II through C V.

As we consider higher ionization states, we see preferentially more of the influence of the halo gas. Nearly all of the low velocity C V, C VI, C VII, O VII, O VIII, and O IX originates in halo gas, which has solar metallicity. Only a small fraction of these ions originate in ablated cloud gas that has merged with the halo gas. Thus, the gas contributed by the cloud only marginally lowers $\bar{\mathcal{M}}_{v<100}$ for for these ions.

2.3.3 VELOCITY SELECTIONS

These trends raise the questions of whether or not clear relationships between metallicity and velocity would be predicted and could be seen throughout an HVC cloud or complex. In order to address the first of those issues, we have subdivided our previous velocity regimes into a larger number of regimes and replotted the metallicity as a function of time for 3 sample ions (O I, O V and O VIII) in Model B. The results are plotted in Figure 2.5. Note that the lowest velocity range excluded stationary halo gas. Also note that our highest velocity range ($v_z \geq 150 \text{ km s}^{-1}$) samples the very small amount of gas in the domain that moves downwards faster than the cloud. Such gas resides in the portions of eddies that move

downward relative to the cloud’s rest frame. Because of this gas’s behavior, the $v_z \geq 150 \text{ km s}^{-1}$ curves are sporadic and unusual.

The other curves follow the trend that slower (from the point of view of an observer) gas is usually more metal-rich than faster gas. The degree of metal enhancement can change as a function of time; for the first 140 Myrs the trend can be seen in all 3 sampled ions.

With the exception of the $v_z \geq 150 \text{ km s}^{-1}$ curve, the metallicity tends to increase with decreasing gas velocity (from the point of view of an observer) for the first 140 Myrs. This shows the tight link between mixing and deceleration as both happen simultaneously after gas is ablated from the head of the cloud. After 140 Myrs, some of the velocity curves overlap. In order to determine if this relationship between speed and metallicity is observed in real HVCs, more data for more ions and along more sight lines are required.

2.4 CONCLUSION

In this paper we present FLASH simulations of HVCs traveling through low density gas in the outer halo. Very early in each simulation, hydrodynamic interactions begin to ablate material from the cloud. The ablated material falls behind the main body of the cloud, where it begins to create a tail. As additional material sheds from the cloud and decelerates, the tail grows, reaching a length of several kpc within the 200 Myrs of simulational time. Although a velocity gradient develops from the main body of the cloud (the head in a “head-tail” structure) through the tail of shed gas, some of the tail gas still travels at speeds $\geq 100 \text{ km s}^{-1}$ and thus is fast enough to meet the definition of high velocity gas. Conversely, if the cloud has a higher metallicity than the halo, mixing would dilute the metal content of the cloud as it traveled toward the disk or orbited the galaxy.

Mixing between cloud gas and ambient gas occurs along the entire length of the head-tail structure. But, the tail gas, which has been exposed to the ambient gas for the greatest length of time, is most highly mixed while the head is least mixed. Not only does mixing take the form of the shredding and deceleration of cloud gas, but it is also involves the

entrainment and acceleration of halo gas. Thus, mixing boosts the metallicity of HVCs whose original metallicity was lower than that in the halo.

At any given time, the metallicity of the gas in any given cell in the domain is directly related to the fractions of material that have come from the halo and cloud, respectively. Thus, the metallicity of the gas can be seen as both a function of mixing and a tracer of previous mixing. Using FLASH hydrodynamic simulations, we estimate and present the degree of mixing as a function of time. We do this separately for the high velocity material and the low velocity material. We use oxygen and carbon as sample elements and present the mixing fractions and resulting metallicities as functions of the time-dependent ionization states of the oxygen and carbon atoms. Although in our simulations the original metallicity of the cloud is very low and the metallicity of the halo is much higher, we present an equation that can be used to determine the metallicity and degree of mixing in cases where the cloud and halo metallicities differ from those chosen for our particular simulations.

In order to more accurately predict the chemical evolution of any HVC, simulations specifically tailored to that cloud would be required. However, our simulations can make rough estimates for observed clouds. In our simulations, mixing raises the metallicity in the least ionized high velocity material from 0.1% to $\sim 25\%$ of solar while raising the metallicity of the most ionized high velocity material from 0.1% to 70% of solar for Model B, our 3-dimensional model, over the span of 200 Myrs. Observations of high velocity neutral and once ionized gas in Complex A for example show that this complex currently has subsolar metallicity in O I ranging between 5% to 10% of solar (see Wakker 2001, Subsection 4.1). Furthermore, Complex C has also been shown to have subsolar metallicity using O I and Si I ranging between 10% and 30% of solar (Shull et al. 2011). If these two HVCs had been interacting with a solar metallicity halo for 200 Myrs all O I in Complex A and as much as 25% of the O I in Complex C could be due to halo material that has been mixed into the clouds as the clouds traveled through the Galaxy's halo. If an observer were to take the observationally determined metallicity (for example 30% of solar) and subtract off

the contribution due to mixing with halo gas over a period of 200 Myrs, ($\sim 25\%$ of solar), then the difference (up to 5% of solar) would be attributed to the cloud as it was before undergoing 200 Myrs of mixing. Such a small metallicity supports the suggestion that some HVCs originated in nearly primordial gas outside of the Galaxy. These are very rough estimates that would be improved upon by more pointed simulational studies whose purpose is to model these particular clouds. The metallicity of the ambient material could also be adjusted. If the halo were given subsolar metallicity the rate of metal augmentation would decrease. This would in turn mean primordial gas entering our halo would require more time traversing our halo to reach observed metallicities.

The simulational results also suggest that if an HVC is observed to have an extremely low metallicity then it must either be located far from a galaxy or have only recently entered that galaxy's metal rich halo.

Over the 200 Myrs of simulated time, parts of the cloud are ablated, decelerated, and/or mixed with hot halo gas. By the end of the simulation only about 21% of the amount of initially cool high velocity gas is still cool and traveling with a high velocity in the simulational domain, whereas the rest has either been heated via mixing with ambient material, such that this gas would no longer be defined as cool or has decelerated to the point we no longer define it as HVC material and would now define it as intermediate or low velocity gas. Considering that the simulations show that some ablated material decelerates to non-HVC velocities, much like in the simulations of Heitsch & Putman (2009) and Marinacci et al. (2010), we suggest that observations of low metallicities in intermediate and low velocity halo gas may indicate material that has been shed by an HVC.

We find that ablated and decelerated material tends to have undergone more mixing and have higher metallicities than its faster counterparts more recently shed from the main body of the cloud. This is most apparent during the first 140 Myrs of the simulation in all ionization states of oxygen. More observations along more sight lines with greater ranges of speed are required to determine if this relationship is observed in real HVCs.

We would like to thank the referee for his or her insightful ideas and suggestions for improvements to this manuscript. We would also like to thank Eric Suter (University of Georgia) and Kara Ponder (University of Georgia) for their individual contributions and hard work on this project. The software used in this work was in part developed by the DOE-supported ASC/Alliance Center for Astrophysical Thermonuclear Flashes at the University of Chicago. The simulations were performed at the The Georgia Advanced Computing Resource Center (GACRC) of the University of Georgia. This work was supported by NASA grants NNX00AD13G and NNX09AD13G, awarded through the Astrophysics Theory Program.

Table 2.1: Initial Simulation Parameters

Model		
	A	B
	Domain	
Coordinates	r, z	x, y, z
Geometry	Cylindrical	Cartesian
Symmetries	About $z=0$ pc	Across $x=0$ pc Across $y=0$ pc
Physical Size	$0 \text{ pc} \leq r \leq 1200 \text{ pc}$	$0 \text{ pc} \leq x \leq 1200 \text{ pc}$ $0 \text{ pc} \leq y \leq 1200 \text{ pc}$
Simulation Duration	$-1,200 \text{ pc} \leq z \leq 19,600 \text{ pc}$	$-1,200 \text{ pc} \leq z \leq 9,600 \text{ pc}$
	200 Myrs	
	Cloud	
Initial Location	$z=0 \text{ pc}, r=0 \text{ pc}$	$x=0 \text{ pc}, y=0 \text{ pc}, z=0 \text{ pc}$
Radius	150 pc	
Internal Density	Hydrogen: $n_{\text{H,cl}}=0.1 \text{ cm}^{-3}$	Helium: $0.1 n_{\text{H,cl}}$
Internal Temperature	$T_{\text{cl}}=10^3 \text{ K}$	
Internal Metallicity	$\mathcal{M}_{\text{cl}}=0.001$	
	Milky Way Gas	
Density	Hydrogen: $n_{\text{H,ISM}}=10^{-4} \text{ cm}^{-3}$	Helium: $0.1 n_{\text{H,ISM}}$
Temperature	$T_{\text{ISM}}=10^6 \text{ K}$	
Metallicity	$\mathcal{M}_{\text{H}}=1.0$	
	Motion	
Speed	150 km s ⁻¹	
Simulational Rest Frame	Initial cloud's rest frame	
Analysis Rest Frame	Halo's rest frame	

From top to bottom: domain parameters, initial cloud parameters, initial halo material parameters, simulated motion within the system, and assumed ionization fraction used in the calculation of the cooling rate in the low temperature gas.

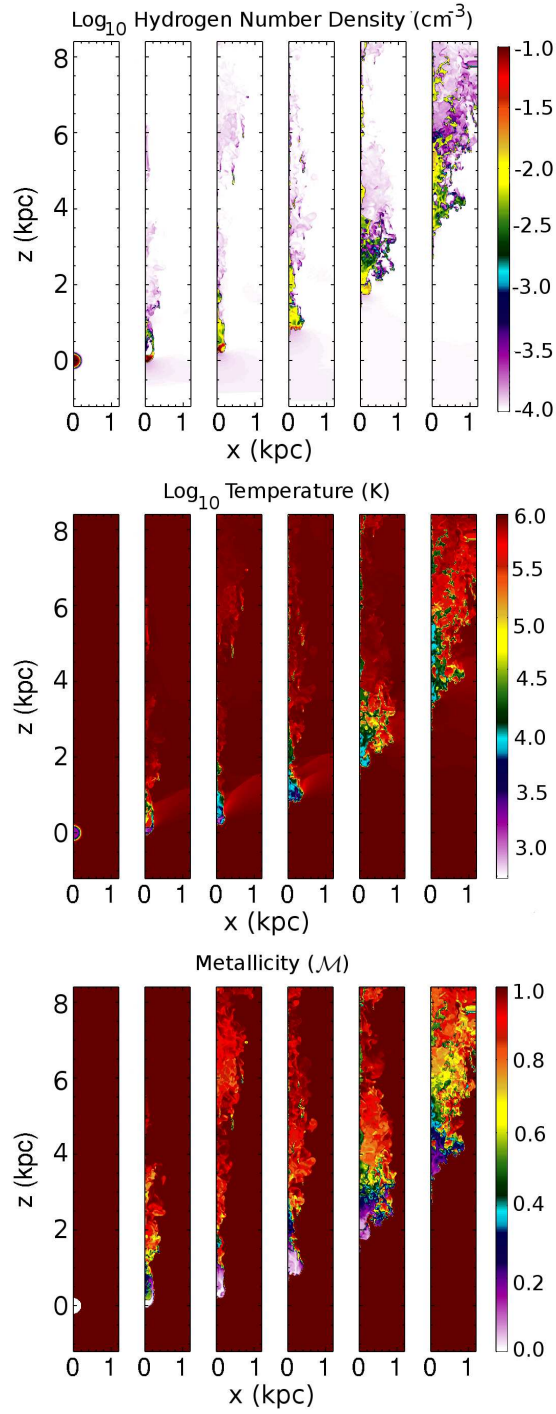


Figure 2.1: System Evolution

Plots of log_{10} hydrogen number density (in units of cm^{-3} , top row), log_{10} temperature (in units of K, middle row), and oxygen metallicity (bottom row) are presented for Model B. Each image is from a single 2 dimensional cut, along $y=0$. The model is shown at a series of ages (0, 40, 80, 120, 160, and 200 Myrs) from left to right, thus revealing the evolution of the system over time.

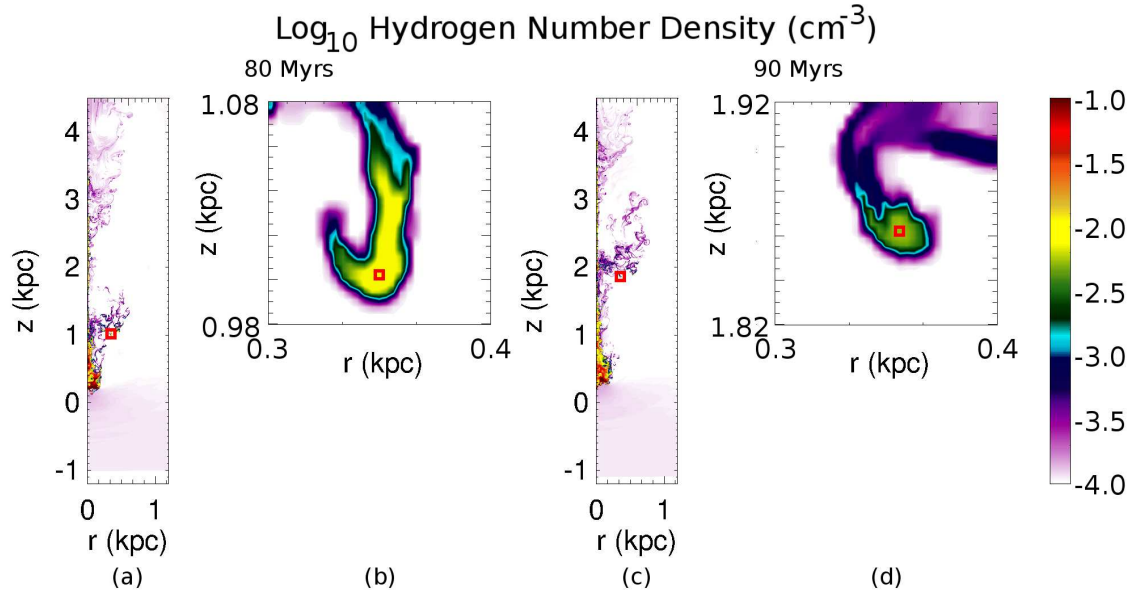


Figure 2.2: Quantitative Example Fragment

Plots of \log_{10} hydrogen number density for Model A showing the fragment used in our quantitative example. The left images, a&b, show the simulation at the age of 80 Myrs, while the right images c&d show the simulation at the age of 90 Myrs. Images a&c show the entire domain with the red square identifying and centered on the chosen fragment. Images b&d are close-up images of the fragment. The red squares in panels b and d are centered on cells chosen for our example quantitative analysis in Section 2.3.1. figure can

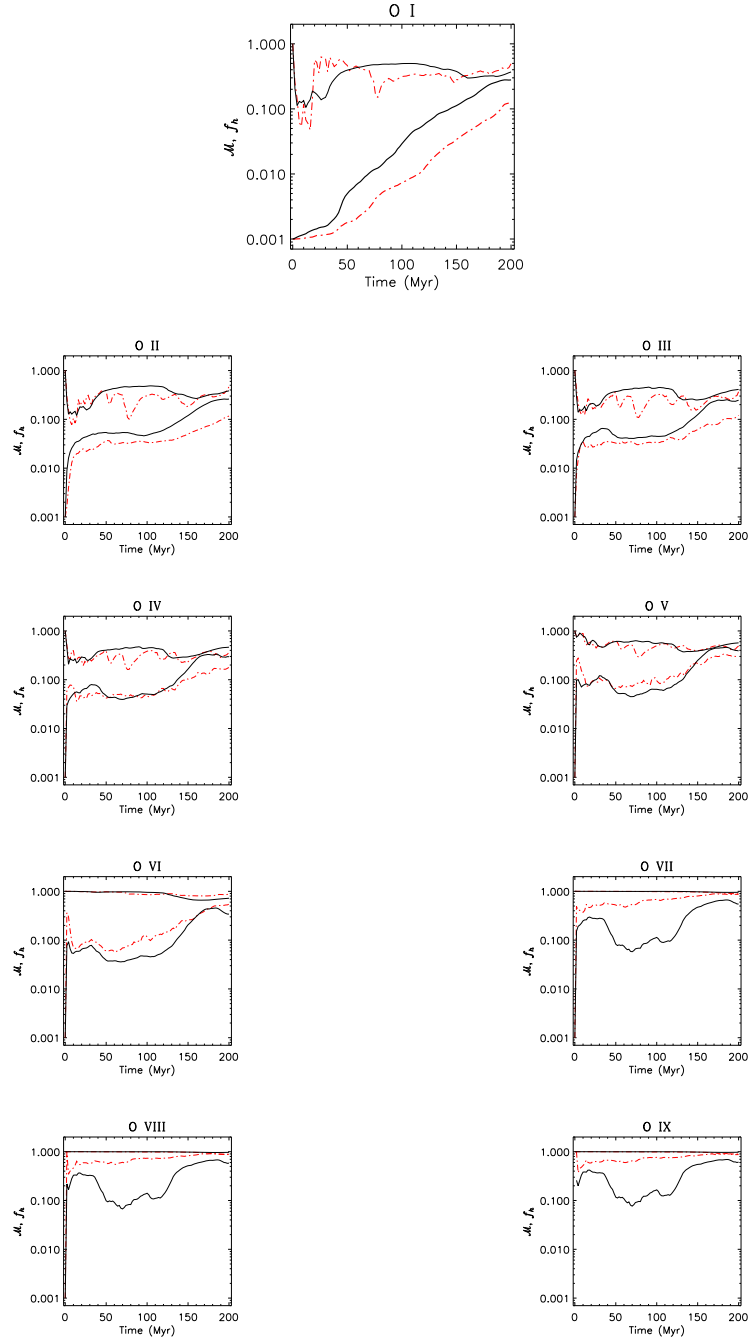


Figure 2.3: f_h vs. Time

Average metallicity (\bar{M}) and halo gas fractions (f_h) as functions of time for each ionization state of oxygen. Model A is represented by the red dot-dash line while Model B is represented by the solid black line. High velocity material for each model is represented by the thicker lines and low velocity material by the thinner counterpart.

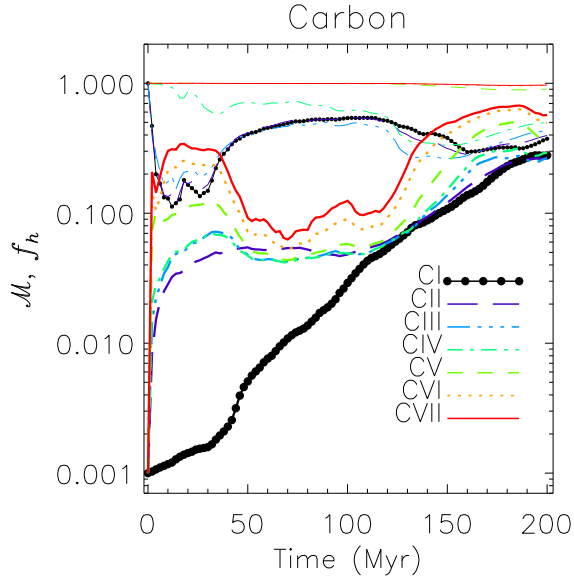


Figure 2.4: $\bar{\mathcal{M}}$ vs. Time & f_h vs. Time

Average metallicity ($\bar{\mathcal{M}}$) and halo gas fraction (f_h) as functions of time for each ionization state of carbon. Only Model B is plotted as all models mimic the trends of oxygen with values agreeing within 0.050. HVC material is plotted using thicker lines while the low velocity material is plotted using the thinner counterparts. Individual ionization states are plotted using different shades from black to light gray (different colors in the online version) and with varying line styles.

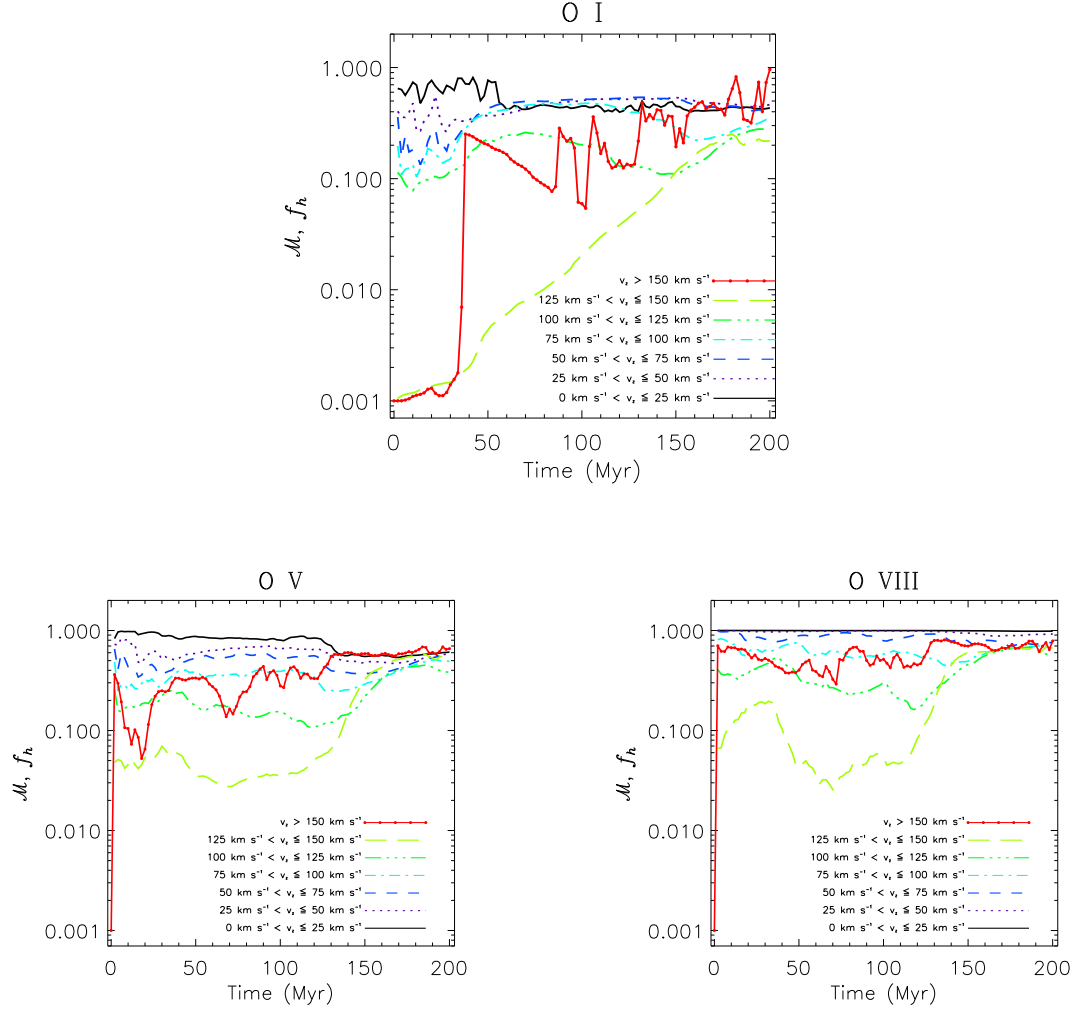


Figure 2.5: Velocity Selections

Average metallicity ($\bar{\mathcal{M}}$) and halo gas fractions (f_h) as functions of time for O I, O V, and O VIII plotted using various velocity selections. For clarity we only show Model B and separate the velocity ranges with differing line styles.

CHAPTER 3

CONDENSATION OF HALO, CIRCUMGALACTIC, AND INTERGALACTIC GAS ONTO MASSIVE HIGH VELOCITY CLOUDS¹

¹Gritton, Jeffrey A., Shelton, Robin L., and Galyardt, Jason E., 2016. Submitted to *The Astrophysical Journal*, 12/30/2016.

3.1 SUBMITTED PAPERS

The previous page is how you use a paper you've already submitted for publication as a chapter.

CHAPTER 4

THE EVOLUTION OF MASSIVE MAGNETOHYDRODYNAMIC HIGH VELOCITY CLOUDS IN UNIFORM MAGNETIC FIELDS¹

¹Gritton, Jeffrey A., Shelton, Robin L., and Galyardt, Jason E., 2017, To be submitted to *The Astrophysical Journal Letters*.

4.1 A YET TO BE SUBMITTED PAPER

CHAPTER 5

NEW CHAPTER OF DISSERTATION

This time, just a standard chapter format.

5.1 STANDARD SECTION

This is a standard section

CHAPTER 6

CONCLUSIONS

Clearly your dissertation conclusions go here.

APPENDIX A

EXTRA PARAMETERS

BIBLIOGRAPHY

- Adams, E. A. K., Giovanelli, R., & Haynes, M. P. 2013, *ApJ*, 768, 77
- Anders, E., & Grevesse, N. 1989, *Geochim. Cosmochim. Acta*, 53, 197
- Burton, W. B., Braun, R., & Chengalur, J. N. 2001, *A&A*, 369, 616
- Collins, J. A., Shull, J. M., & Giroux, M. L. 2007, *ApJ*, 657, 271
- . 2009, *ApJ*, 705, 962
- Fryxell, B., Olson, K., Ricker, P., et al. 2000, *ApJS*, 131, 273
- Heitsch, F., & Putman, M. E. 2009, *ApJ*, 698, 1485
- Hill, A. S., Haffner, L. M., & Reynolds, R. J. 2009, *ApJ*, 703, 1832
- Hsu, W.-H., Putman, M. E., Heitsch, F., et al. 2011, *AJ*, 141, 57
- Joung, M. R., Putman, M. E., Bryan, G. L., Fernández, X., & Peek, J. E. G. 2012, *ApJ*, 759, 137
- Klypin, A., Kravtsov, A. V., Valenzuela, O., & Prada, F. 1999, *ApJ*, 522, 82
- Kwak, K., Henley, D. B., & Shelton, R. L. 2011, *ApJ*, 739, 30
- Kwak, K., Shelton, R. L., & Raley, E. A. 2009, *ApJ*, 699, 1775
- Lockman, F. J., Murphy, E. M., Petty-Powell, S., & Urlick, V. J. 2002, *ApJS*, 140, 331
- Marinacci, F., Binney, J., Fraternali, F., et al. 2010, *MNRAS*, 404, 1464
- Murphy, E. M., Lockman, F. J., & Savage, B. D. 1995, *ApJ*, 447, 642

- Putman, M. E., Peek, J. E. G., & Joungh, M. R. 2012, ARA&A, 50, 491
- Sembach, K. R., Wakker, B. P., Savage, B. D., et al. 2003, ApJS, 146, 165
- Shull, J. M., Jones, J. R., Danforth, C. W., & Collins, J. A. 2009, ApJ, 699, 754
- Shull, J. M., Stevans, M., Danforth, C., et al. 2011, ApJ, 739, 105
- Tripp, T. M., Wakker, B. P., Jenkins, E. B., et al. 2003, AJ, 125, 3122
- Wakker, B. P. 2001, ApJS, 136, 463
- Wakker, B. P., & van Woerden, H. 1997, ARA&A, 35, 217
- Wolfire, M. G., McKee, C. F., Hollenbach, D., & Tielens, A. G. G. M. 1995, ApJ, 453, 673